

Soprano 1

Brass Book

Incognito Drum and Bugle Corps

♩ = 150

Incognitus

1

2

3

4

5

6

7

p

p

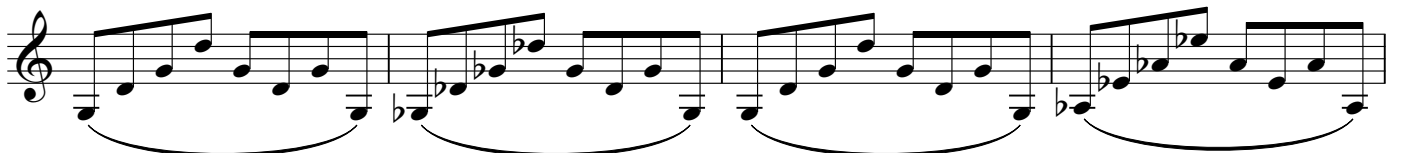
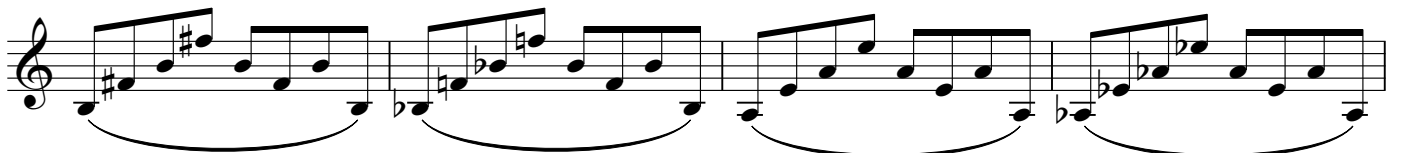
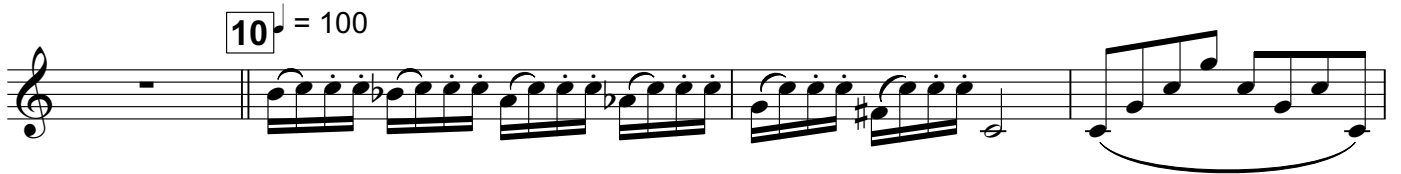
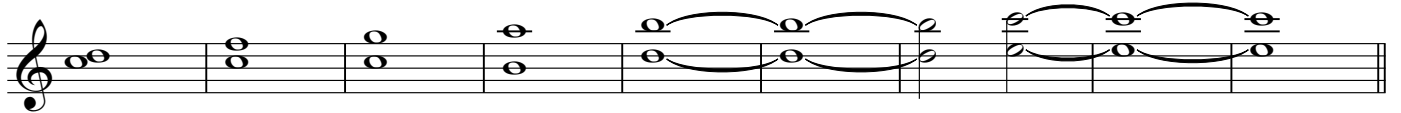
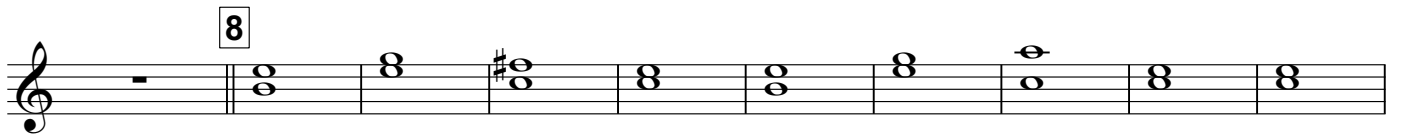
p

p

p

p

p



Musical staff with a melodic line consisting of eighth and quarter notes, with slurs under groups of notes.

Musical staff with a rhythmic accompaniment of eighth notes. The word "Pedal Tone" is written above the staff. The staff ends with a double bar line and a pedal point symbol (three vertical lines).

Musical staff starting with a measure rest, followed by a series of quarter notes.

11

Musical staff with notes and rests, including a measure with a whole note and a measure with a whole note and a fermata.

12

Musical staff with a melodic line of eighth and quarter notes.

Musical staff with a melodic line of eighth and quarter notes.

13

Musical staff with notes and rests. Dynamics markings *fff*, *p*, *f*, and *mf* are present below the staff.

14

Musical staff with notes and rests. Articulation markings "Tongue" and "Abs" are placed above the staff.

Musical staff with notes and rests. Articulation markings "Abs" and "Tongue" are placed above the staff.

An empty musical staff.

15

Pedal

16 ♩ = 80

pp < *f* > *pp* < *f* > *p* *mf*

17 150

18

19

p

